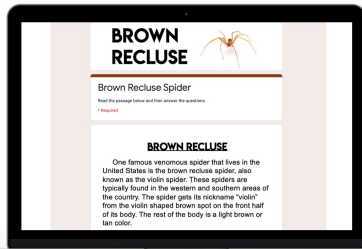


# DANGEROUS SPIDERS

## DIGITAL READING PASSAGES & QUESTIONS

### BROWN RECLUSE

#### DIGITAL READING PASSAGE & QUESTIONS



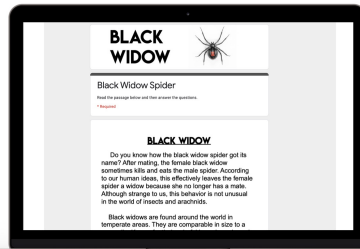
GRADES 3-5

FOR GOOGLE  
CLASSROOM

Created by: Shelly Rees

### BLACK WIDOW

#### DIGITAL READING PASSAGE & QUESTIONS



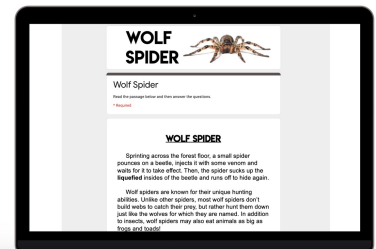
GRADES 3-5

FOR GOOGLE  
CLASSROOM

Created by: Shelly Rees

### WOLF SPIDER

#### DIGITAL READING PASSAGE & QUESTIONS



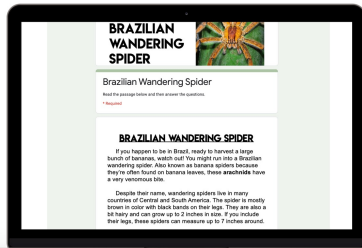
GRADES 3-5

FOR GOOGLE  
CLASSROOM

Created by: Shelly Rees

### BRAZILIAN WANDERING SPIDER

#### DIGITAL READING PASSAGE & QUESTIONS



GRADES 3-5

FOR GOOGLE  
CLASSROOM

Created by: Shelly Rees

### FUNNEL WEB SPIDER

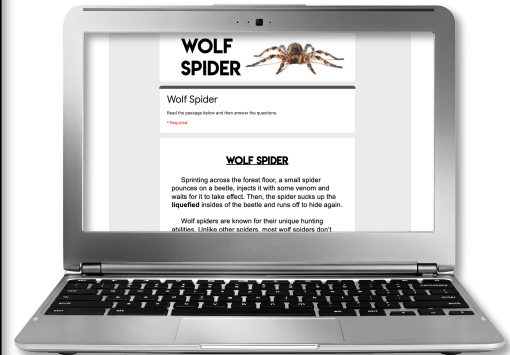
#### DIGITAL READING PASSAGE & QUESTIONS



GRADES 3-5

FOR GOOGLE  
CLASSROOM

Created by: Shelly Rees



# GRADES 3-5

Created by: Shelly Rees

# FOR GOOGLE CLASSROOM

# DANGEROUS SPIDERS

## READING PASSAGE SHORTCUTS WITH QUESTIONS

### WOLF SPIDER

Sprinting across the forest floor, a small spider pounces on a beetle, injects it with some venom and waits for it to take effect. Then, the spider sucks up the **liquefied** insides of the beetle and runs off to hide again.

Wolf spiders are known for their unique hunting abilities. Unlike other spiders, most wolf spiders don't build webs to catch their prey, but rather hunt them down just like the wolves for which they are named. In addition to insects, wolf spiders may also eat animals as big as frogs and toads!

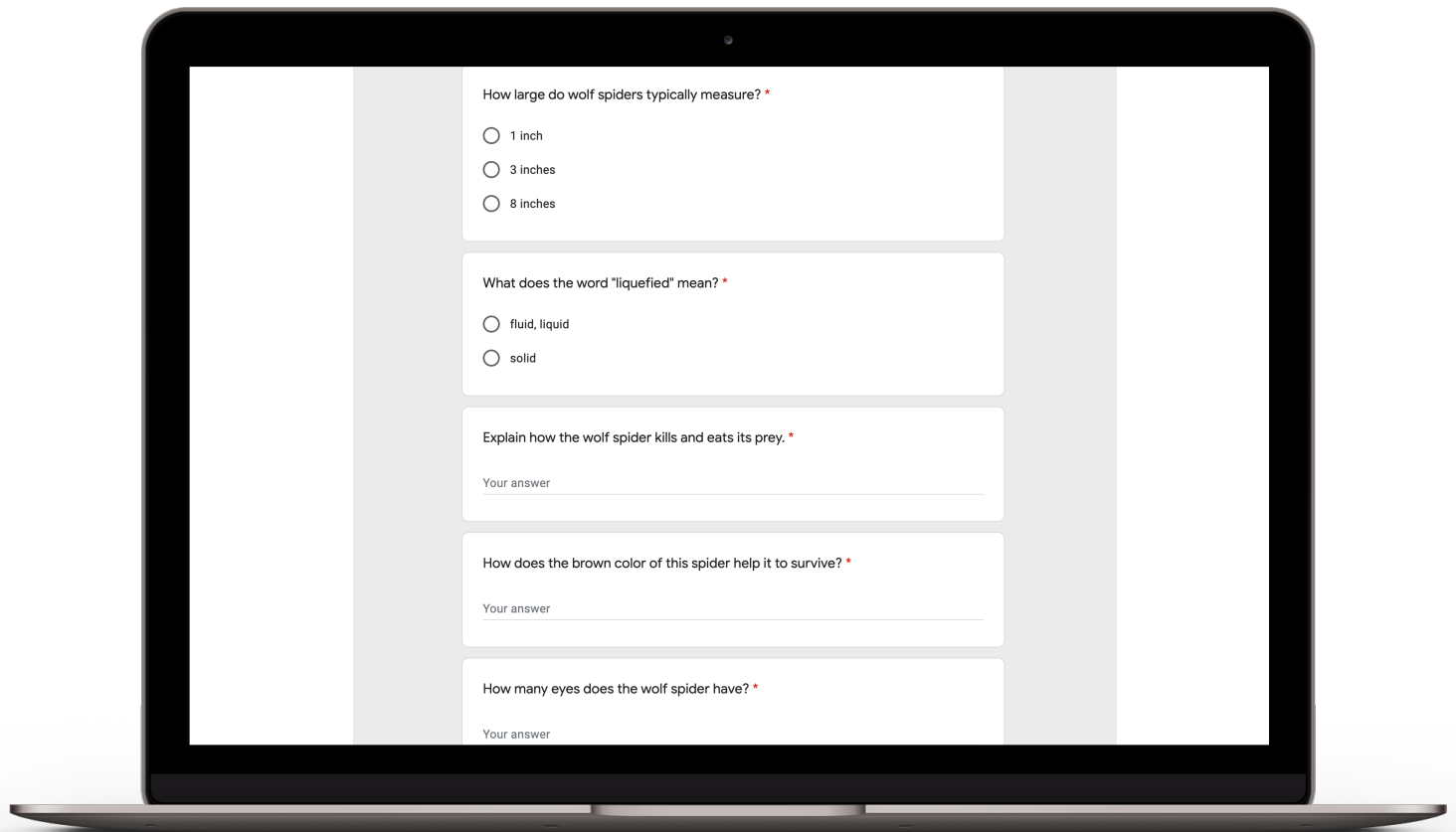
They are small, spiny spiders only measuring up to a little over an inch around. Typically, they are brown colored which serves to camouflage them against dried leaves on the forest floor. In addition to forests, wolf spiders can live just about anywhere in the world. Some interesting habitats where they can also be found are on mountaintops and near volcanoes. Another interesting feature of wolf spiders is their eight eyes. Typically, the eyes are arranged in two sets of two on the top of their head and facing forward. Then, right on top of their mouth, they have a row of four eyes.

For humans, wolf spiders pose little risk. Most bites are generally harmless and cause irritation or itches at

Each informational passage is high-interest and designed for a reading in a short time-frame. The questions are both multiple choice and open ended.

# DANGEROUS SPIDERS

## READING PASSAGE SHORTCUTS WITH QUESTIONS



How large do wolf spiders typically measure? \*

☐ 1 inch

☐ 3 inches

☐ 8 inches

What does the word "liquefied" mean? \*

☐ fluid, liquid

☐ solid

Explain how the wolf spider kills and eats its prey. \*

Your answer \_\_\_\_\_

How does the brown color of this spider help it to survive? \*

Your answer \_\_\_\_\_

How many eyes does the wolf spider have? \*

Your answer \_\_\_\_\_

Each informational passage is high-interest and designed for a reading in a short time-frame. The questions are both multiple choice and open ended.

# DANGEROUS SPIDERS

## INCLUDES PRINTABLE VERSIONS

### BLACK WIDOW

Do you know how the black widow spider got its name? After mating, the female black widow sometimes kills and eats the male spider. According to our human ideas, this effectively leaves the female spider a widow because she no longer has a mate. Although strange to us, this behavior is not unusual in the world of insects and arachnids.

Black widows are found in temperate areas. The female is known for her markings on her abdomen. To catch their prey, they spin webs. Typically, these webs are made of silk. Flies, beetles, grasshoppers may also eat caterpillars. The venom from the spider enters the body of the insect, which is why the spider is so dangerous.

Many people fear spiders because they are venomous. However, most are not usually aggressive towards large animals. If they are, they will use their defense, such as if they are threatened. The symptoms of a bite are usually small and red.

### FUNNEL WEB SPIDER

Digging in your garden, you come across a small hole surrounded by a spider web. If you're in Australia, you may have come across the den of a funnel web spider. These **venomous** spiders love moist, dark areas and often seek out areas under logs or rocks. So, where do these spiders live and why are they so dangerous?

Australian funnel web spiders are found in the eastern area of the continent. Most of them prefer the forest, but may also live in rocky areas of gardens or even make their way into homes. These

### WOLF SPIDER

Sprinting across the forest floor, a small spider pounces on a beetle, injects it with some venom and waits for it to take effect. Then, the spider sucks up the **liquefied** insides of the beetle and runs off to hide again.

Wolf spiders are known for their unique hunting abilities. Unlike other spiders, most wolf spiders don't build webs to catch their prey, but rather hunt them down just like the wolves for which they are named. In addition to insects, wolf spiders may also eat animals as big as frogs and toads!

They are small, spiny spiders only measuring up to a little over an inch around. Typically, they are brown colored which serves to camouflage them against dried leaves on the forest floor. In addition to forests, wolf spiders can live just about anywhere in the world. Some interesting habitats where they can also be found are on mountaintops and near volcanoes. Another interesting feature of wolf spiders is their eight eyes. Typically, the eyes are arranged in two sets of two on the head and facing forward. Then, right behind the mouth, they have a row of four eyes.

For humans, wolf spiders pose little threat. They are generally harmless and cause no serious harm. Most other symptoms include swelling, redness, and nausea. If symptoms are serious or prolonged, it's best to get medical help.

### ANSWER THE QUESTIONS

Name \_\_\_\_\_ Date \_\_\_\_\_

1. A black widow is about the size of a:  
a) paperclip b) grasshopper c) house
2. What does the word **fatal** mean?  
a) helpful b) deadly c) scary
3. Explain how the black widow spider got its name.

### BROWN RECLUSE

One famous venomous spider that lives in the United States is the brown recluse spider, also known as the violin spider. These spiders are typically found in the western and southern areas of the country. The spider gets its nickname "violin" from the violin shaped brown spot on the front half of its body. The rest of the body is a light brown or tan color.

The majority of brown recluse spiders don't bite people. They only bite in self defense such as if you sit on them or roll over on one of them while you're sleeping. However, their bites can be very nasty. A brown recluse bite can kill the **tissue** at the site of a bite, leaving an awful wound. Usually, these wounds can heal on their own, although some require medical attention. Very rarely, this spider's bite can

### ANSWER THE QUESTIONS

Name \_\_\_\_\_ Date \_\_\_\_\_

1. What is another name for the brown recluse spider?  
a) burrow spider b) violin spider c) cave spider
2. What does the word **tissue** mean?  
a) skin b) bones c) bandage
3. Describe the appearance of the brown recluse spider.
4. Where in the United States are these spiders found?
5. Explain why a brown recluse spider might bite a person.

### ANSWER

Name \_\_\_\_\_

1. How many different types of spiders are there?  
a) 35
2. What does the word **harmless** mean?  
a) harmless
3. Describe what a funnel web spider is.
4. Describe the diet of a funnel web spider.

### BRAZILIAN WANDERING SPIDER

If you happen to be in Brazil, ready to harvest a large banana, you might run into a Brazilian wandering spider. These spiders are known as banana spiders because they are found on banana leaves, these **arachnids** have

Brazilian wandering spiders live in many parts of South America. The spider is mostly brown with dark bands on their legs. They are also up to 2 inches in size. If you include the body, they can measure up to 7 inches around.

Brazilian wandering spiders usually raise their front legs. This is the underside of the spider's belly to warn potential predators that this

spiders are typically **nocturnal** and they often hide in holes or under rocks.

A Brazilian wandering spider's bite can cause a severe allergic reaction. The venom can cause a severe allergic reaction.

When studying the Brazilian wandering spider, it might be useful for someday, doctors will be able to use the medicine that comes from this spider's

### ANSWER THE QUESTIONS

Name \_\_\_\_\_ Date \_\_\_\_\_

1. Including their legs, how large can a Brazilian wandering spider measure?  
a) 2 inches b) 5 inches c) 7 inches
2. What does the word **arachnid** mean?  
a) animal b) spider c) fruit
3. Describe what happens when a Brazilian wandering spider is threatened.
4. What does the word **nocturnal** mean?  
a) active in the day b) active at night
5. Where in the world are these spiders found?
6. What is the purpose of this passage?  
a) to inform b) to entertain c) to persuade
7. List 5 symptoms of a Brazilian wandering spider bite.
8. What does the venom contain?
9. The Brazilian wandering spider's venom might be useful for making medicine. True or False?

# ANSWER KEYS INCLUDED!